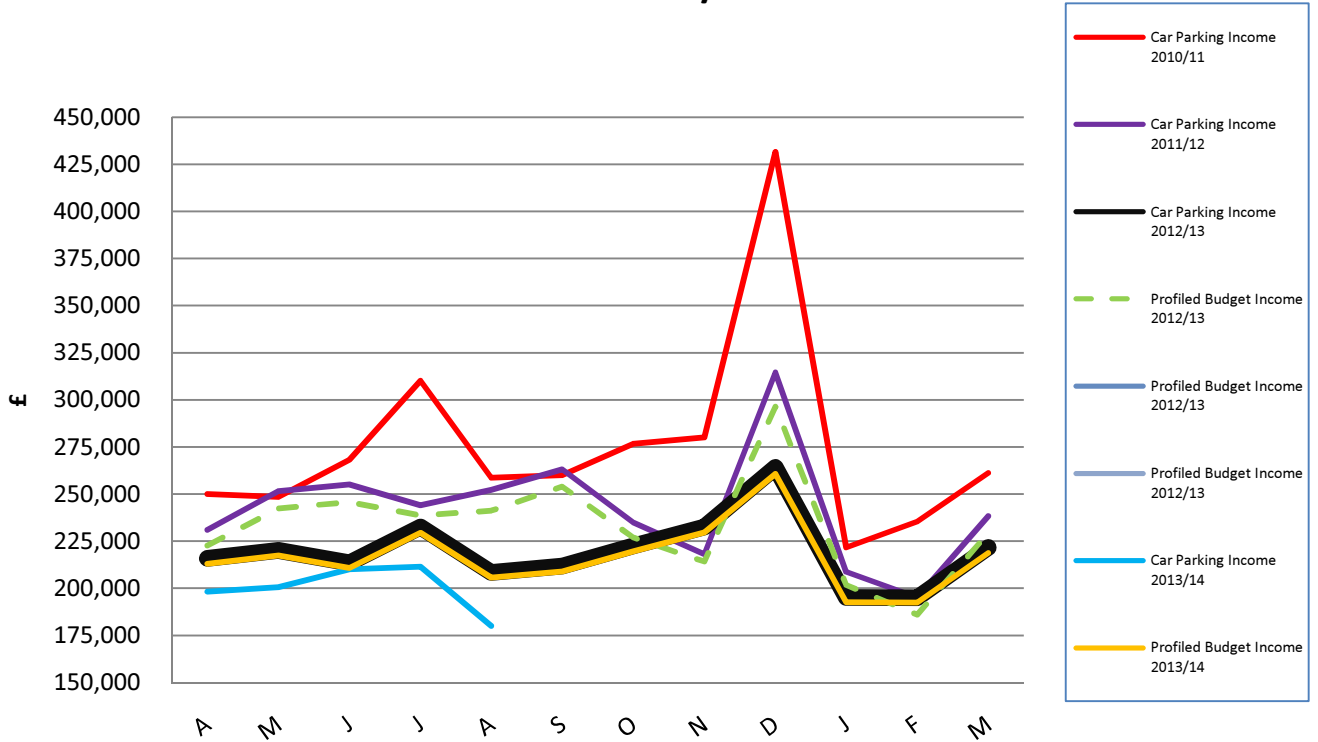
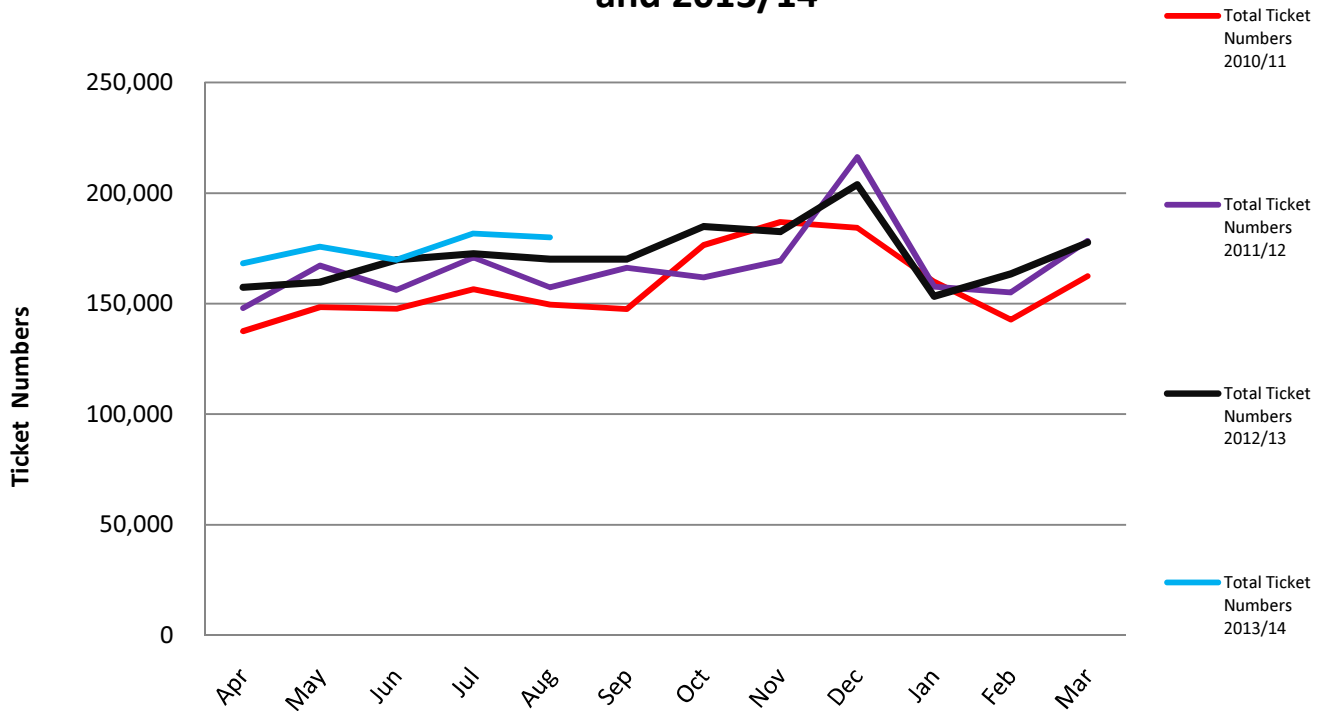


### Total Daily Ticket Income 2010/11, 2011/12, 2012/13 and 2013/14



### Total Summary Ticket Numbers 2010/11, 2011/12, 2012/13 and 2013/14



Notes:

- 1) The volume of tickets issued to the end of period 5 was 45,946 higher than for the same period in 2012/13.
- 2) However, income to the end of August was £75,829 less than budgeted for the first 5 months of 2013/14.